

Superior Triple

Who says three's a crowd? Our Superior Triple provides plenty of room for up to three tenants. It's self-contained. It's private. It includes three separate bedrooms, each with its own entry door and closet.

APARTMENT QUICK FACTS

SIZE

> 679 – 695 sq.ft. / 63.1 – 64.6m²

PRICE PER MONTH

> \$2,274 or \$758/person/room

ESTIMATED MONTHLY UTILITIES

> \$75 per month

FEATURES

- > Steel entrance doors for security and safety
- > Combination smoke and heat detectors
- > Combined kitchen, dining room/sitting area
- > Three separate bedrooms, each with own entry door and closet for privacy (one of the bedrooms has double entry doors)
- > Freshly painted concrete and gypsum board (drywall) walls
- > Designer vinyl floor tiles throughout the apartment
- > Large double glazed windows for natural light that open fully to take advantage natural ventilation
- > Ceiling mounted light fixtures in all rooms
- > Telephone, television cable and high speed internet ready
- > Hall entrance closet
- > Adjustable heating

KITCHEN

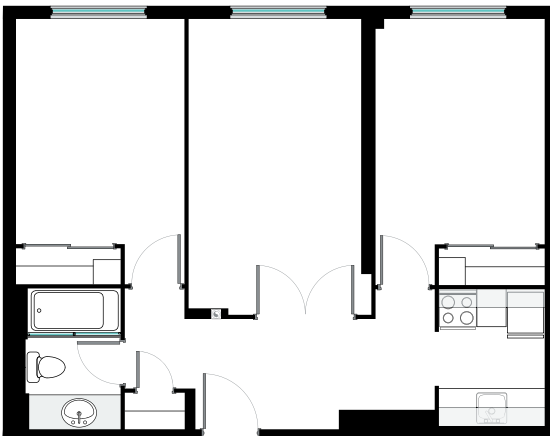
- > Quality "L" shaped kitchen millwork with upper and lower cupboards and counter top with stainless steel hardware and sink
- > Name brand appliances including: frost free refrigerator/freezer combination and a four burner stove range)
- > Ceramic tile back splash
- > Counter height dedicated electrical receptacles
- > Kitchen hood with exhaust fan over cook top
- > Designer vinyl floor tiles
- > Ceiling mounted light fixture

BATHROOM

- > Vanity with sink and storage below
- > Mirror above the vanity.
- > Toilet
- > Bathtub/shower combination with ceramic tile surround
- > Ceramic tiled floor
- > Exhaust fan
- > Stainless steel towel bar and toilet paper accessories

OPTIONS

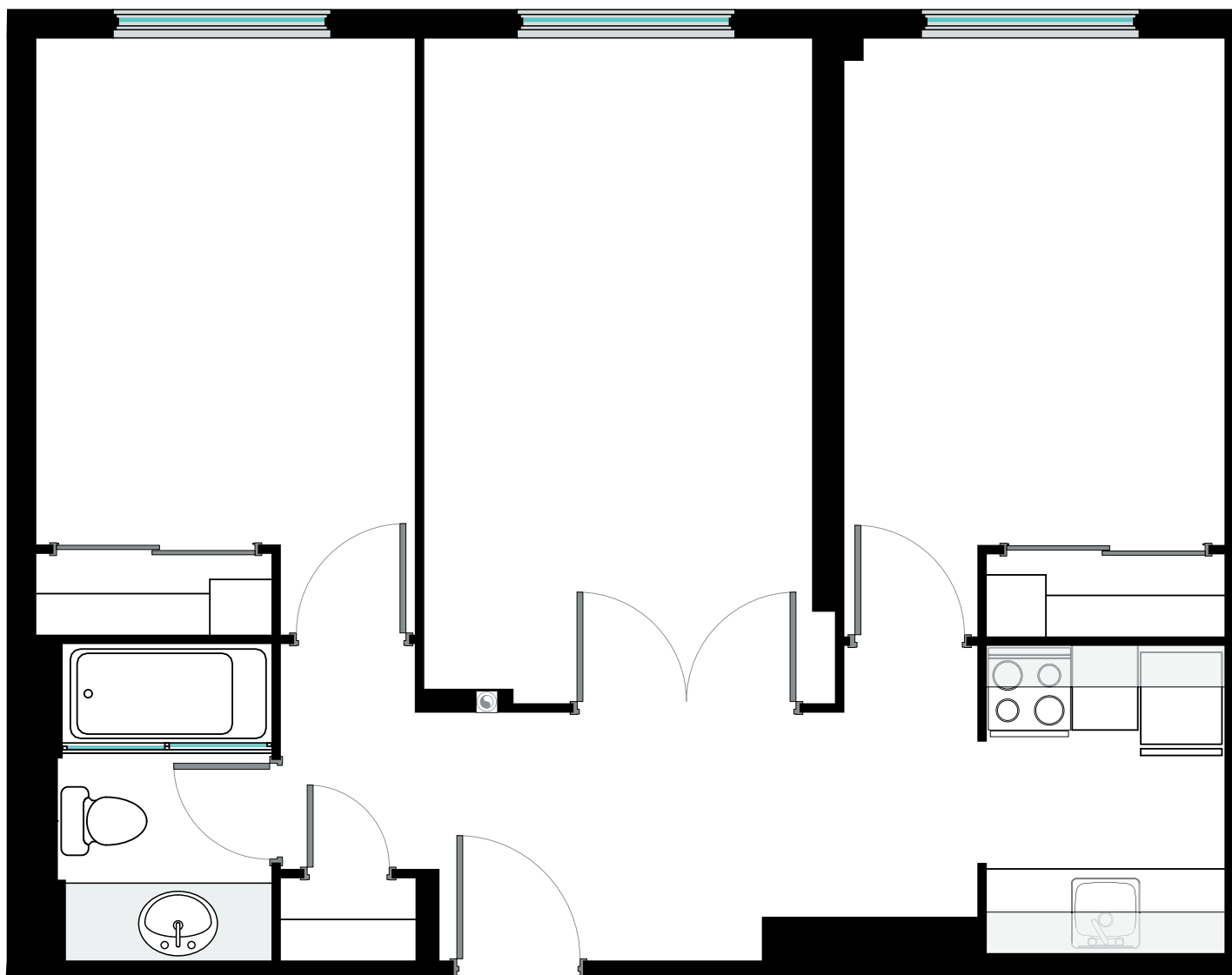
- > Apartments are unfurnished, with furniture packages as an upgrade (details at CampusCommon.ca)
- > Other move-in options include tableware, flatware, bedding, cookware and air conditioner rental



MORE INFO

For more information
visit CampusCommon.ca

Superior Triple

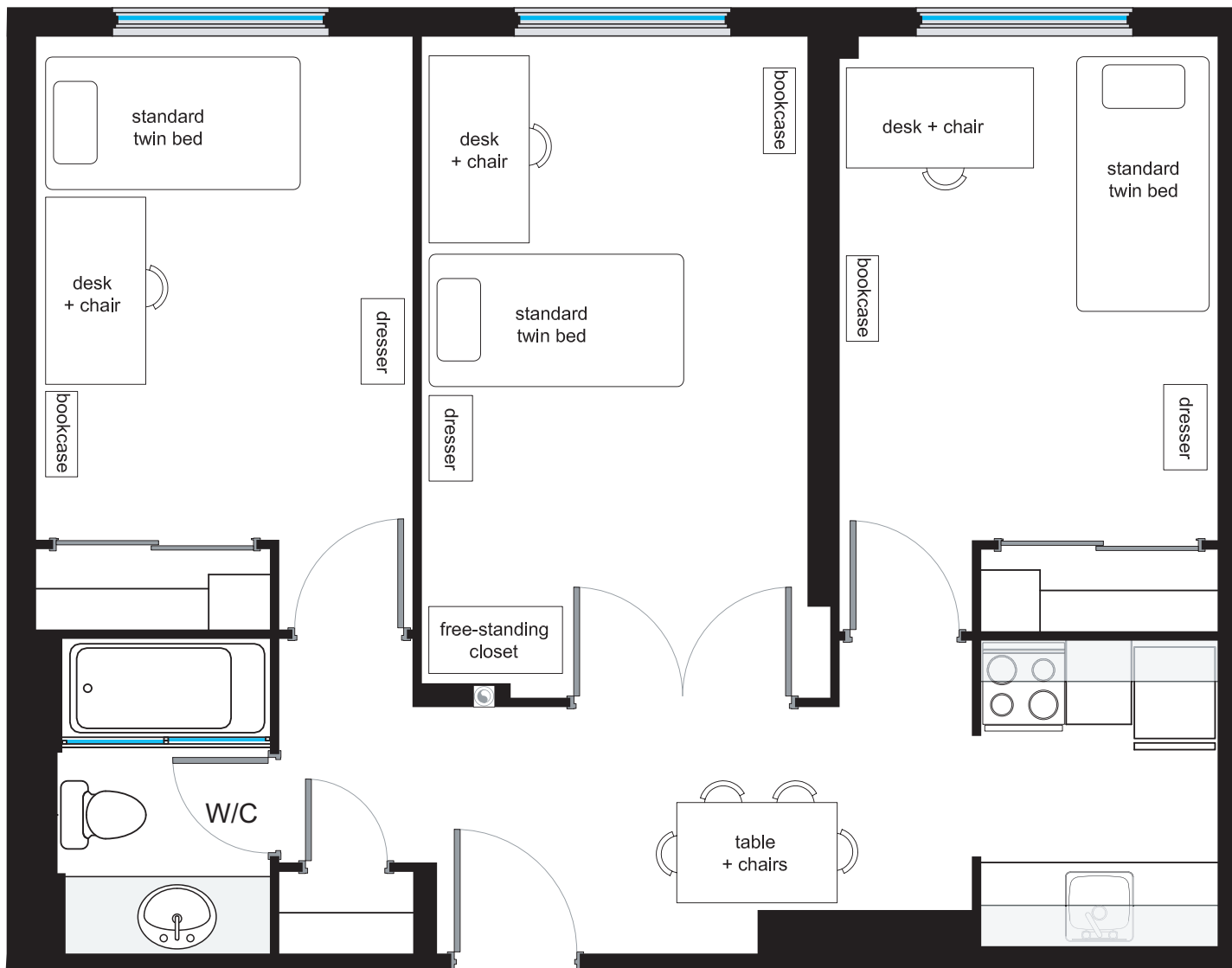


MORE INFO

For more information
visit CampusCommon.ca

For more information on terms and conditions
visit CampusCommon.ca

Superior Triple (possible furnished layout)*



* Furniture configuration is for demonstration purposes only and may differ from the actual furniture option available at the time of occupancy.



MORE INFO

For more information
visit CampusCommon.ca

For more information on terms and conditions
visit CampusCommon.ca